

THE CENTER FOR INCLUSIVE EDUCATION IN THE GRADUATE SCHOOL PRESENTS:

ANNUAL REPORT

2014 - 2015



**SUNY TURNER FELLOWSHIP • NSF AGEP-T FRAME
NIH IMSD-MERGE • NIH IRACDA NY-CAPS • NSF LSAMP-BRIDGE
NSF REU-NANOTECHNOLOGY • NATIONAL GEM CONSORTIUM**



Stony Brook
University

Table of Contents

CIE Scholar Expenditures At-a-Glance	P. 3
Core Programming	
Academic Enrichment	P. 5-6
Professional Development	P. 6-8
Mentoring & Community Building	P. 8-11
Scholar Awards & Achievements	P. 12-13
Diversity-Focused Graduate Recruitment	P. 14-15
Presentations, Panels & Workshops	P. 16
Grant Submissions	P. 16
Grant Support & External Collaborations	P. 17
NSF AGEP-T FRAME	P. 18-19
National GEM Consortium	P. 20
NIH IMSD-MERGE	P. 21
NIH IRACDA NY-CAPS	P. 22-23
SUNY Turner Fellowship	P. 24-25
NSF LSAMP-BD	P. 26
NSF REU-Nanotechnology	P. 26
Center for Inclusive Education Staff	P. 27



CIE Scholar Expenditures At-a-Glance

Total direct stipend/salary assistance = \$1,597,267

UNDERGRADUATE RESEARCH STIPENDS

Name	Amount	Notes
NIH Initiative for Maximizing Student Development, Maximizing Excellence in Research for Graduate Education	\$39,866	Summer and academic year research support
NSF Research Experience for Undergraduates (REU): Nanotechnology for Health, Energy & the Environment	\$32,000	Eight summer interns at \$4,000 each

GRADUATE STIPENDS

Name	Amount	Notes
NSF GEM Fellowship	\$16,000	Direct stipend support
NIH Initiative for Maximizing Student Development, Maximizing Excellence in Research for Graduate Education	\$4,400	Support of IMSD-MERGE Scholars during summer participation in Heads Up program
NSF Louis Stokes Alliance for Minority Participation, Bridge to the Doctorate	\$222,750	Six stipends total: \$165,000; Six tuition and fees total: \$57,750
SUNY Turner Fellowship	\$830,451	Direct stipend support

POSTDOCTORAL APPOINTMENTS

Name	Amount	Notes
NSF Alliances for Graduate Education and the Professoriate - Transformation, Frontiers of Research & Academic Models of Excellence	\$82,800	Two SBU AGEP-T FRAME Fellows; does not include Brookhaven National Laboratory's stipends
NIH Institutional Research and Academic Career Development Award, New York Consortium for the Advancement of Postdoctoral Scholars	\$396,000	Nine salaries total

Other direct financial support = \$124,583.54

CONFERENCE TRAVEL AWARDS

Interconnectedness to a diverse and vast research network is a key access point for advancement in graduate study and professional career paths. Conferences provide an access point to such networks - offering opportunities for underrepresented scholars to broaden their academic exposure within their disciplines. The CIE makes available to scholars opportunities to compete for conference travel funding. The CIE funds between 30 and 50 scholars per year to present research at scientific conferences and/or attend a scientific conference as a first time attendee. Total support for 2014-2015 was \$65,598.

AGEP-T FRAME: \$11,017 (13) • IRACDA NY-CAPS: \$22,533 (8) • LSAMP-BD: \$6,100 (7) • Turner Fellowship: \$25,948 (24)

RESEARCH GRANTS

Research progress can only be maintained when scholars have the ability to sustain their research efforts in a funded and supportive environment throughout the calendar year. To this end, CIE programs (originated by SUNY AGEP and the Turner Fellowship) have committed to sustaining scholars' research. CIE programs awarded a total of \$58,985.54 in research grant support over the 2014-2015 year.

Core Programming: Academic Enrichment, Professional Development and Mentoring & Community Building

The Center for Inclusive Education designs and administers innovative programming and activities to promote the success of our undergraduate, graduate and postdoctoral scholars. These efforts focus on providing our scholars with academic and professional preparation, access to mentoring and advising and the support of a vibrant community of researchers and academics to ensure that they successfully complete their education and training to ultimately become productive members of the academic and scientific workforce.



Academic Enrichment

SUMMER DISSERTATION WRITER'S BOOT CAMP

This pilot program, hosted in June, July and August, sought to help students preparing dissertations, articles for publication or course writing assignments stay on track as members of a scheduled, structured writing accountability group that met every Friday. An opening session was held with 13 scholars in attendance. Guest speakers Dr. Maria Rodolis, Dr. Javier Monzón and Dr. Taylor Shoberle, presented tips and tricks for maximizing the output of writing sessions. For the other sessions hosted during the summer, the average weekly attendance was six scholars per session. Based upon the positive feedback of the summer boot camp program, the CIE offered the "Keep Calm and Write On" Writing Boot Camp over the 2015 winter intersession. Held on Friday mornings in January (9, 16, 23), scholars were given the opportunity to work on their writing projects in the CIE space. A formal opening session was not held and writing assistance was offered on an as-requested basis. On average, three scholars attended the three weekly sessions.

WRITING TO WIN WORKSHOP

The CIE held the fall Writing to Win workshop on September 9. AGEP-T FRAME Postdoctoral Fellow, Dr. Cindy Leiton, presented tips to help graduate students prepare a National Science Foundation Graduate Research Fellowship Program (NSF GRFP) application. Dr. Leiton also worked directly with eight Stony Brook students who applied for the 2015 NSF GRFP.

Total workshop participants: 61

2015 NSF-GRFP (CIE) recipients:

- Elizabeth Marie Berrigan, PhD student in Physics and Astronomy; Turner Fellow; AGEP-T Scholar
- Jesse Aaron Brizzi, PhD student in Computer Science; Turner Fellow; AGEP-T Scholar
- Wilka T Carvalho, MS student in Computer Science, USC; CSTEP/LSAMP Scholar; IMSD-MERGE mSI Leader
- Ashleigh Lussenden, PhD student in Neuroscience; Turner Fellow; AGEP-T Scholar
- Spencer Saraf, PhD student in Marine & Atmospheric Sciences; 2014 Doctoral Diversity Fellowship in STEM awardee; AGEP-T Scholar

2015 NSF-GRFP (CIE) honorable mentions:

- Nicole Alexis Bender, PhD student in Ecology & Evolution; Turner Fellow; AGEP-T Scholar

GRANTSMANSHIP WORKSHOP SERIES

This fall, the CIE and the Office for the Integration of Research, Education and Professional Development (IREP) hosted a three-session Grantsmanship Workshop Series on strategies, tactics and writing tips to prepare individual research grant proposals. Grant writing consultant Beth Schachter offered participants valuable insight into the creative, scientific and organizational aspects of preparing a highly competitive research grant application. Participants were also given the opportunity to draft a preliminary scientific plan for their own proposal as well as develop an action plan for completing the project. A select group of attendees received one-on-one consulting with Ms. Schachter on a proposal in progress after the series.

Participation for the series:

- Grantsmanship Workshop on September 22 = 35
- Grantsmanship Workshop on September 29 = 33
- Grantsmanship Workshop on October 6 = 33

AGEP-T FRAME Presents

DISSERTATION WRITING SUPPORT



Workshop
Friday, June 6th at 9am
**Workshop will be virtual*

Learn tips and techniques from recent PhD graduates

- Preparing to write
- The writing process
- Getting to the finish line
- Tips & best practices for success

Writing Boot Camp
Dates: Fridays, June 13th to August 8th
Time: 8am to 11am
**Work will be provided*

- Choose between the Center for Inclusive Education or Graduate School Conference Room
- Writing assistance will be provided upon request
- Prizes will be available

Workshop Facilitators

Location
Center for Inclusive Education
2401 Computer Science Building

Please RSVP

Contact AGEP_FRAME@stonybrook.edu for more information



Stony Brook University | Center for Inclusive Education

Writing to Win

Learn How to Prepare a Winning Application for the NSF Graduate Research Fellowship Program

Tuesday, September 9, 2014 at 5:00 pm
Charles B. Wang Center, Lecture Hall 1

The National Science Foundation (NSF) Graduate Research Fellowship Program supports outstanding graduate students in science, technology, engineering, and mathematics (STEM) disciplines who are pursuing research-based master's and doctoral degrees. Learn from a panel of experts, how to prepare a competitive application for this prestigious and lucrative fellowship.

About the NSF Graduate Research Fellowship Program

- The NSF expects to award 2,000 fellowships this year
- The fellowship provides a three-year annual stipend of \$32,000 along with a \$12,000 allowance for tuition and fees
- The fellowship is portable to wherever you go to pursue your graduate education
- Deadlines begin late October and it takes about 4-6 weeks to prepare a competitive application
- Graduating seniors, as well as graduate students in their first or second years, may apply

Host: Nina Maung-Gaona, Assistant Dean for Diversity, The Graduate School Director, Center for Inclusive Education

Speakers: Dr. Susan Brennan, Professor, Department of Psychology, NSF Reviewer
Dr. Cindy Leiton, Postdoctoral Fellow, Department of Anesthesiology, NSF GRFP Winner
Stephen Lee, Doctoral Student, Department of Biomedical Engineering, NSF GRFP Winner

For more information and to RSVP, please visit <http://goo.gl/hCUi9r>

STRATEGIES AND TACTICS FOR NIH & NSF GRANT WRITING

Sponsored by the IREP Office and the Center for Inclusive Education

DATES: September 22
September 29
October 6
Participants should plan to attend all three sessions

TIME: 9:00-10:30am

LOCATION: Wang Center Rm 201

SPEAKER: Beth Schachter, Ph.D.
bethschachterconsulting.com

Attend this workshop series and learn strategies, tactics, and writing tips for preparing individual research grant proposals for the NIH and NSF.

The workshop will cover:

- Planning, organizing, and drafting a proposal.
- Tips on good writing and effective use of graphics

Participants will:


- Draft a preliminary scientific plan for their own proposal and develop an action plan for completing the project.
- Become eligible for one-on-one consulting on their proposal after the workshop.

Who should sign up?
Postdocs and senior graduate students

RSVP by September 15:
<http://bit.ly/1eL5t6d>

For more information contact:
Kathleen Flint Ehm
Kathleen.ehm@stonybrook.edu

Karian Wright
karian.wright@stonybrook.edu



BIOMATH LEARNING CENTER: MODIFIED SUPPLEMENTAL INSTRUCTION

On February 12, the CIE, in collaboration with Undergraduate Biology and the Academic Success and Tutoring Center, launched the IMSD-MERGE Biomath Learning Center: Modified Supplemental Instruction (mSI) program. Modeled after the effective interventions of the CIE Peer-Led Study Network, the mSI program is designed for freshman and sophomore biomedical science majors to receive peer tutoring in calculus prerequisite courses to support their aptitude in these courses so that they can continue on with their degree programs successfully and on-track.

Forty Calculus A (MAT125) students registered to participate in the mSI program which consisted of two weekly sessions (Thursday and Friday) conducted by four Student Supplemental Instructor (SSI) Leaders - Wilka Carvalho (senior, physics major), Michael Lam (sophomore, biology major), Robert Maloney (junior, mathematics major), and Kevon Pekchi (senior, biology major). SSI Leaders received formal training from the Academic Success and Tutoring Center and followed the curriculum set forth by the MAT125 instructors. The outcomes of this first iteration of the mSI program are promising - participants who attended all sessions scored on average 30 percent higher in the course than non-participants.

Professional Development



TOPIC BASED LUNCHEES WITH SENIOR LEADERSHIP

The Topic Based Lunches (TBL) with Senior Leadership series is structured to give CIE Scholars a glimpse into the professional pathway of senior Stony Brook University leaders. By doing so, we believe critical discussions about the direction of the University, as well as issues pertaining to diversity and graduate education, will emerge. This will ultimately foster a strong sense of school spirit and provide valuable professional development advice to scholars.

- **President Samuel L. Stanley Jr., MD**

“Thoughts on Effective Leadership”

Fall TBL - December 2, 2014

Total attendance: 30

- **Frances L. Brisbane, PhD, Dean & Professor of the School of Social Welfare**

“Value of Relationships in Developing and Sustaining Effective Leadership”

Spring TBL- March 26, 2015

Total attendance: 21



COLLEGE TEACHING SEMINAR SERIES

The College Teaching Seminar Series featured a variety of teaching and learning workshops for the CIE postdoctoral community, held on Tuesday afternoons throughout the academic year. Coordinated by the office of Teaching, Learning and Technology, topics ranged from writing a teaching philosophy, to evidence-based instructional practices, to creating powerful presentations to engage students. Attendees were given the opportunity to explore topics and integrate the information into the development of their own pedagogy. The series concluded with a Micro-Teaching session on May 12 where scholars presented a short lesson incorporating the skills they learned throughout the course to a group of their peers for feedback. Two to five postdocs were present at each session.

Included within the College Teaching Seminar series were three workshops led by the Alan Alda Center for Communicating Science. The first workshop, titled “Improvisation for Scientists,” began laying the foundation towards developing science communication skills. Through a series of improvisation exercises, participants learned how to speak more spontaneously, responsively and directly with their audience. As a follow-up to the first workshop, the “Distilling Your Message” workshop focused on learning how to speak clearly and vividly about your work and why it matters - in terms non-scientists can understand. The three-part series concluded with a “Media Interviews: Extreme Distilling” workshop, which focused on learning how to prepare for a media interview. This included shaping clear and crisp answers, fielding difficult questions and reinforcing the fundamental message. Participants were interviewed on video by a professional journalist and the interviews were reviewed and critiqued during the session. After the workshop, participants were able to download their interviews for their personal or professional use.

MENTAL DISABILITY AND ACADEMIC LIFE

An interactive workshop addressing key concepts about working with students with mental disabilities



Margaret Price, PhD is an associate professor of English at Spelman College, where she teaches rhetoric, composition and creative nonfiction. Her areas of specialization include disability studies, qualitative research methodologies and digital accessibility. Dr. Price's book, *Mind at School: Rhetorics of Mental Disability and Academic Life*, (University of Michigan Press, 2013) won the Outstanding Book Award from the Conference on College Composition and Communication.

Tuesday, April 14, 2015
10:00 am

Center for Inclusive Education
The Graduate School
2401 Computer Science Building

Please come prepared with scenarios and questions to share

RSVP: <http://ow.ly/Kavs2>

Sponsored by the Center for Inclusive Education, the Graduate School and the School of Health Technology & Management



For a disability-related accommodation, please call 2-1386

CIE SPEAKER SERIES

The Speaker Series creates an opportunity for CIE Scholars to learn the personal journeys of distinguished figures from various fields and disciplines as a means to foster their professional development. CIE Scholars have the opportunity to connect with individuals who can offer insight into navigating graduate school, finding rewarding employment opportunities and expanding professional networks.

- **Margaret Price, PhD:** On April 14, the Center for Inclusive Education, the Graduate School and the School of Health Technology & Management presented an interactive workshop addressing key concepts about working with students with mental disabilities. Guest speaker, Dr. Margaret Price, shared information on “Transient Spaces & the Traces They Leave: Practicing Access in Higher Education” and answered questions from the audience. Total attendance: 19
- **Neil deGrasse Tyson, PhD:** The CIE co-sponsored the “GSO 35th Anniversary” event and was given the unique opportunity to host a Q&A session with Dr. Neil deGrasse Tyson on April 27. Total attendance: 40

NYC INDEPENDENT SCHOOLS FACULTY DIVERSITY SEARCH INFORMATION SESSION

On January 13, Cathy Cramer, Executive Director of Interschool/Faculty Diversity Search, provided a Faculty Diversity Search Information Session to interested CIE Scholars. To date, Cramer and her team have placed six CIE scholars and alumni in faculty and leadership positions in the K-12 independent schools of New York City. Cramer invited participants to attend the New York Association of Independent Schools (NYSAIS) Job Fair on Saturday, February 21 at the Columbia Grammar and Preparatory School in New York City.

FACULTY CAREER WEEK

The second annual Faculty Career Week was held the last week in April. Panel presentations and Q&A sessions provided an opportunity for attendees to explore Chalk Talks, Interviewing Skills and Negotiations.

“**Chalk Talks**” - April 28, Presenter: Dr. Antoinette “Toni” Stroter, Director of Research, Evaluation & Assessment and Assistant Professor at Liberty University
Total participants: 16

“**Interviewing Skills**” - April 30, Moderator: Dr. Charles Taber, Vice Provost for Graduate and Professional Education & Dean of the Graduate School, Panelists: Terrence Buck, Principal Human Resources Representative at Brookhaven National Laboratory; Dr. Marianne Moore, IRACDA NY-CAPS Postdoctoral Associate in the Department of Ecology and Evolution; Dr. Arthur Samuel, Department Chairperson and Professor in the Cognitive Science Department of Psychology; and Dr. Stella Tsirka, Vice Provost for Faculty Affairs & Professor in the Department of Pharmacological Sciences
Total participants: 42

“**Negotiations**” - May 1, Moderator: Dr. Dave Ferguson, Associate Provost for Diversity and Inclusion, Chair for the Department of Technology and Society, Distinguished Service Professor, Panelists: Dr. Julia Bear, Assistant Professor in the School of Business; Dr. Robert (Bob) Haltiwanger, Department Chairperson and Professor in the Department of Biochemistry and Cell Biology; Dr. Eduardo Mendieta, Department Chairperson and Professor in the Department of Philosophy
Total participants: 28

PRACTICAL PROFESSIONAL SKILLS SERIES

The Center for Inclusive Education and the Office for the Integration of Research, Education and Professional Development (IREP) have joined together to present a four-part Practical Professional Skills Series to Stony Brook graduate students and postdocs. The interactive series is designed to promote dialogue around key issues affecting today's professionals.

“Navigating Complex Organizations” - workshop presented by Dennis Lazarus, Deputy Country Director for the United Nations Development Programme, on October 9
Total participants: 54

“Giving and Receiving Constructive Feedback” - workshop presented by Mary Eisenstein, Communications Coach & Training Expert for Melmar Enterprises, and Nina Maung-Gaona on December 8
Total participants: 32

“Time & Energy Management: Achieving Peak Performance” - workshop presented by Marianna Savoca and Dr. Alfreda James, from the SBU Career Center, on March 3
Total participants: 32

“Strategic Professional Growth: Planning Your Path to a Satisfying Career” - workshop presented by Dr. Nancy Goroff and Dr. Kathleen Flint Ehm on May 7
Total participants: 39

THE CENTER FOR INCLUSIVE EDUCATION (CIE), THE GRADUATE SCHOOL, AND THE OFFICE FOR THE INTEGRATION OF RESEARCH, EDUCATION AND PROFESSIONAL DEVELOPMENT (IREP) PRESENT:

Practical Professional Skills Series

A new, interactive series designed to promote dialogue around key issues affecting today's professionals. The goal of this series is to provide graduate students and postdocs with a meaningful orientation on the following four topics: **navigating complex organizations, time and energy management, building and maximizing professional relationships, and strategic professional growth.** With knowledgeable, experienced discussion leaders, each 90-minute workshop will cover a range of issues within the broad topic.

Navigating Complex Organizations

HOSTED BY DR. NANCY GOROFF, ASSOCIATE PROVOST

THURSDAY OCTOBER 9, 2014 - 1:00 - 2:30PM
LUNCH WILL BE SERVED
WANG CENTER ROOM 201

In the first workshop of this series, we will review the general structure of most organizations and provide some strategies for navigating bureaucracy.

Issues such as dealing with uncertainty, managing relationships, organization politics, and work pressure will be discussed. Additionally, participants will learn why more and more organizations value adaptability as a key skill in their employees and how to make meaningful contributions in any work environment.



Speaker:
Dennis Lazarus

Dennis Lazarus has a 25 year career in international development in various capacities within the United Nations Development Programme (UNDP). He has served in Afghanistan as Deputy Country Director as well as serving in other duty stations in various capacities in India, Indonesia, Lesotho, New York, Papua New Guinea and Somalia. He has learned to operationalize support for major international disasters such as tsunamis, earthquakes and floods. In addition, he enhanced partnership development by improving communication and negotiating complex issues, which improved working relationships with host governments, vendors, donor partners and other organizations.

Mentoring & Community Building

MONTHLY RESEARCH CAFÉS

The Research Café series is designed to promote cross-discipline knowledge among the CIE community by providing a showcase for the exemplary research being conducted by our top scholars. It is our intent to facilitate communication and collaboration between departments and research areas that may ultimately foster ground-breaking research. Average attendance: 22; total attendance: 200; unique CIE Scholar attendance: 40

Fall 2014 Research Cafés = 4

- September 10: **Diana Orozco Guimet**, Genetics - ‘The Adenovirus L4-22K Protein has Distinct Functions in Post-transcriptional Regulation of Gene Expression and Encapsidation of the Viral Genome’
- October 3: **Miles Hentrup**, Philosophy - ‘Hegel and Skepticism’
- November 19: **Jennifer Martinez**, Molecular and Cellular Biology - ‘Bridging the GAP: Investigating the Interaction Between Gap Junction Proteins and Cell Signaling in the Ocular Lens’
- December 10: **Alexis Santana**, Molecular Genetics and Microbiology - ‘The Interplay of RTA and NF-κB Signaling During Gammaherpesvirus Infection’

Spring 2015 Research Cafés = 5

- January 7: **Jesse John**, Geosciences - ‘Investigations of a Functional Nano Mineral for Remediating High Level Nuclear Waste’
- February 4: **Emmanuel Asare**, Genetics - ‘A Poliovirus Cold Case: A Mutation in the Vicinity of a Capsid Interacting Site of Poliovirus 2CATPase Results in a Defect in Viral Encapsidation’
- March 11: **Jennifer DeLeon**, Molecular and Cellular Biology - ‘PI3K p110β Maintains Bioenergetic Homeostasis by Regulating Endocytic Turnover of the Glucose Transporter GLUT1’
- April 15: **James Herrera**, Anthropological Sciences - ‘The History and Mystery of Life on Madagascar’
- May 13: **Vanessa Lynn**, Sociology - ‘Collective memories of the War on Drugs in NYC: Toward a discourse of responsibility and victimhood’



CULTURAL HERITAGE CELEBRATIONS

Hispanic Heritage Month (October)

2015 marked the 25th anniversary of Stony Brook University's Hispanic Heritage Month. In honor of this milestone, the CIE co-sponsored the HHM Dance Series with the Department of Pharmacology, that included instructions and demonstrations of flamenco, tango, bomba y plena, campo dances, salsa, palos, merengue and bachata. We wish to extend our congratulations to two CIE scholars, Luisa Torres (Pharmacology and Flamenco Dancer) and Sophia Basaldua (Cultural Analysis & Theory and Argentine Tango Dancer) who coordinated and performed in two of the three dance series events. Average attendance at CIE sponsored dance events was 25.

- HHM Opening Ceremony – Wednesday, October 1, 2014
- Celebrate HHM with the CIE – Wednesday, October 22, 2014
- HHM Closing Ceremonies Dinner – Friday, October 24, 2014
- HHM Closing Ceremony – Wednesday, October 29, 2014

Black History Month (February)

In honor of Black History Month, eight CIE scholars joined CIE staff to attend the Black in America tour featuring Soledad O'Brien in the Staller Center on February 16. The tour focused on the most recent installment of O'Brien's multi-part CNN documentary series, Black in America, titled "Black & Blue". O'Brien and a panel of presenters addressed the recent and growing national issues of race and police brutality across the country. In response, the CIE hosted a lunchtime discussion on February 20. Open only to CIE scholars, the conversation was an opportunity for the eight attendees to share their thoughts, experiences and feelings about the presentation within a community of supportive and compassionate peers.

Women's History Month (March)

In honor of Women's History Month, the Topic Based Lunch held on March 26 and the CIE Social held on March 31, honored the leadership and achievements of two Stony Brook employees. The TBL speaker, Dr. Francis L. Brisbane, is the longest sitting dean of social work in the country and was recognized by the Stony Brook president in 2007 as being the "Conscience of the University". Her wealth of experience, extensive volunteer efforts and professional accomplishments have positioned Dr. Brisbane as a senior leader at the institutional, local and national levels. At the CIE Social, the community gathered to celebrate Program Manager, Toni Sperzel, and her newly appointed permanency at Stony Brook University.

Total TBL attendance: 21; Total CIE Social attendance: 42

SAFE SPACES WORKSHOP

The CIE hosted an Office of Student Affairs LGBTQ* Services Space Foundations Workshop on October 29. The workshop is an introductory course designed to provide information to the campus community regarding LGBTQ* services on and off campus.

KEEPING IT REAL

Facilitated by CIE Postdoctoral Associate, Dr. Angel Gonzalez, the Keeping it Real series promotes informal small group discussions about many of the issues that, although not directly related to academics, nevertheless impact the day-to-day lives of graduate students. This series fosters social support and provides insight into different ways to deal with these issues.

Average attendance: 5; Total attendance: 20; Unique individuals: 15

Fall 2014 Discussions = 2

- "Social Life While in Graduate School" - September 17 – Total CIE Scholars: 8
- "Family and Cultural Pressure" - November 24 – Total CIE Scholars: 2

Spring 2015 Discussions = 2

- "Achieving Enlightenment: Fostering a Spiritual and Academic Life" - February 18 – Total CIE Scholars: 7
- "Living on a Graduate Student Budget" - April 8 – Total CIE Scholars: 3

SUMMER LUNCHESES WITH CONTINUING STUDENTS

Summer Lunches offer scholars an opportunity to meet with the CIE director and program managers to more deeply get to know about our advanced scholars' experiences and the ways in which the CIE can better support them during their degree pursuit. Fifteen CIE scholars participated in the three summer lunches held throughout June (6) and July (9). The conversations greatly inspired the programmatic planning for the upcoming academic year.

FIRST YEAR MIXER

IMSD-MERGE Scholars and Turner Fellows joined together to celebrate their first year in their respective programs at Bliss on February 11. One scholar shared that she "enjoyed the opportunity to relax outside of school while getting to know what other people are doing in their programs." Total attendance: 14

COMMUNITY OF STUDENT MENTORS

In her letter written for the fall edition of the CIE Newsletter, Director Nina Maung-Gaona declared 2015 to be the “Year of Mentoring”. To this end, the CIE submitted grant and award nominations to bolster current mentoring efforts and to recognize all that has been accomplished over the past 13+ years (see page 16 for more information). The Community of Student Mentors program has been a key component of the application/description process – largely due to the significant and measurable outcomes of the peer-to-peer mentoring initiative. CSM Mentors and Mentees are provided with thorough in-person trainings (September 23 & 26) on developing mentoring relationships and given extensive resources for guiding their mentoring practices, including the National Academy of Sciences “Advisor, Teacher, Role Model, Friend,” handbook for mentoring (NAS, 1997). Following each monthly meeting, both mentors and mentees are required to complete a meeting log sheet summarizing from both participant perspectives the meeting - what was discussed, what if any challenges or concerns arose, and what actions/steps were considered and planned for overcoming any obstacles or challenges. The meeting log sheet is then reviewed by the CSM program coordinator. At the start of each semester, the CIE hosts an annual CSM kickoff event at the AMF Smithtown Lanes to help mentors and mentees get acquainted in a casual setting; 17 participants on September 20 and 12 participants on February 7. In 2014-2015, 24 mentor/mentee matches were made. Total participation: 48

2014 CSM Mentors

Alexis Santana	Molecular Genetics & Microbiology
Allison Nesbit	Interdepartmental Anthropology
Amber Bonds	Molecular & Cellular Pharmacology
Ariel Negron	Neuroscience
Ashleigh Lussenden	Neuroscience
Cam Monestime	Neuroscience
Christian Ruiz	Genetics
Cindy Leiton	Pharmacology
Crystal Lewis	Chemistry
Daphne Meza	Biomedical Engineering
Dex-Ann Brown	Molecular & Cellular Pharmacology
Elizabeth Atkinson	Ecology & Evolution
Felicia Jackson	Clinical Psychology
Jasmine Valentin	SOMAS
Jeannette Marine	Chemistry
Jennifer DeLeon	Molecular & Cellular Biology
Jesse John	Geosciences
Jinelle Wint	Molecular & Cellular Biology
Lyl Tomlinson	Neuroscience
Melissa Sims	Geosciences
Patricia Enmore	Neuroscience
R. Emilio Fernandez	Technology, Policy & Innovation
Usmanu Salisu	Chemistry
Vanessa Lynn	Sociology

Graduate Program

2014 CSM Mentees

Steve Tsotras	Genetics
Carrie Mongle	Interdepartmental Anthropology
Chantal Adlam	Chemistry
Ricardo Raudales	Neuroscience
Alexandria Dellapenna	Biology
Denise Laspina	Biology
Obiora Egbo	Biochemistry
Jesse John	Geosciences
Dominic Moronta	Chemistry
Maryam Ige	Biomedical Engineering
Anya Goldberg	Mathematics
Nicole Bender	Ecology & Evolution
Sarah Bannon	Clinical Psychology
Mariana Rius	SOMAS
Jinelle Wint	Molecular & Cellular Biology
Melissa Sims	Geosciences
Owen Abe	Materials Science
Sarah Georges	Biology/BME Specialization
Andreyah Pope	Biochemistry & Structural Biology
Brandon Rhymer	Geosciences
Cam Monestime	Neuroscience
Edward Turner	Applied Math & Statistics
Kellon Belfon	Chemistry
Diana Méndez	Hispanic Languages & Literature

Graduate Program

CIE SOCIALS

In keeping with the philosophy that building community is key to establishing an environment conducive to mentoring, the CIE incorporates social gathering activities into its monthly programming. These monthly socials are strategically positioned to strengthen the connections between scholars which will ideally lend themselves to the solidification of organic mentoring relationships. Maintaining a vibrant and active community among the CIE Scholars is of utmost importance to our ability to have impact in all areas of programming. CIE Scholars - Average attendance: 20; Total attendance: 121

- August 22 (Welcome Lunch) – Total attendance: 44
- November 4 (Annual Photo Day) – Total attendance: 38
- December Graduation Celebration (December 17, Hilton Garden Inn) – Total attendance: 60
- January 21 (Celebrate All Things New) – Total attendance: 16
- February 27 (Celebrate Black History Month) – Total attendance: 14
- March 31 (Celebrate Women’s History Month) – Total attendance: 42
- April 22 (Spring Fever) – Total attendance: 16
- May Graduation Celebration (May 21, Hilton Garden Inn) – Total attendance: 67
- June 10 (Hello/Goodbye) – Total attendance: 22 (plus six REU interns)

GRADUATE RECOGNITION CEREMONIES

At the end of each semester, the CIE celebrates the graduation of those scholars who successfully completed their dissertations and degree requirements. Celebrations were hosted on December 17, 2014 and May 21, 2015 at the Hilton Garden Inn. New this year, the CIE awarded two scholars and two Stony Brook faculty members at the May Graduation Celebration. The 2015 Faculty & Scholar Awards for Excellence honored four individuals in recognition of their mentoring, leadership, service and commitment to the Center for Inclusive Education. These outstanding members of the community have made significant impact on the quality of diversity and/or mentoring and were presented with an honorary plaque at the event.



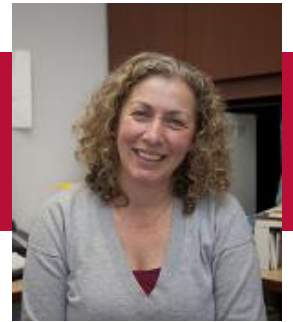
December Graduate Recognition Ceremony & Celebration (4 PhD; 1 MS = 5) Total attendance: 60
May Graduation Celebration & Awards Ceremony (7 PhD; 1 MD; 1 MM; 3 MA; 2 MS = 14) Total attendance: 67

2015 Scholar Award for Excellence

- Dr. Cindy Leiton, AGEP-T FRAME Postdoctoral Fellow
- Dr. Jennifer Martinez, AGEP-T FRAME Scholar

2015 Faculty Award for Excellence

- Dr. Eduardo Mendieta, Department of Philosophy
- Dr. Stella Tsirka, Department of Pharmacological Sciences



Scholar Awards & Achievements

THE CIE COMMUNITY IS COMPRISED OF INDIVIDUALS ACROSS DISCIPLINES WHO ARE PURSUING EXCELLENCE IN THEIR EDUCATION, RESEARCH AND CAREERS. TO THIS END, IT IS AN HONOR TO RECOGNIZE AND CELEBRATE THEIR ACHIEVEMENTS.



Turner Fellow, [Jordi Alonso](#), was interviewed in April for [WOMR radio](#) (Provincetown, MA).

AGEP-T FRAME and LSAMP Bridge to the Doctorate Fellow, [Emmanuel Asare](#), participated as a mentor in the 6th Annual Monroe College Male Empowerment Seminar on April 23.

CIE alumnus (AGEP and Turner Fellow) [Jean Christian Brutus](#) received a Most Promising Engineer award during the [BEYA STEM Conference](#) held in Washington on February 6. Brutus graduated from Stony Brook in December 2014 with a Master of Science degree in Biomedical Engineering and is currently a mechanical engineer at US Army Communications-Electronics Research, Development and Engineering Center (CERDEC).

[Kayode Ekwunife-Orakwue](#) helped to create a Rubric as part of his volunteer service with The North East Comprehensive Center Center on Innovations in Learning. The Rubric, a K-12 Virtual Learning Program, was published and will be adopted by NYSED, the Rhode Island Department of Education and the Massachusetts Department of Elementary and Secondary Education.

Turner Fellow, [Lori Gallegos De Castillo](#), received a Ford Foundation Dissertation Fellowship. Only 30 were awarded nationwide. [R. Emilio Fernandez](#), PhD candidate in Technology, Policy and Innovation, AGEP-T FRAME and Turner Fellow, was granted Honorable Mention. [Emma Velez](#), PhD student in Philosophy, Turner Fellow, was granted Honorable Mention for the Ford Foundation Predoctoral Fellowship.

Turner Fellow, [Jacinth Greywoode](#), graduated with his MA in Music and will be transitioning into the PhD program in music composition. He also won the Duino Prize for Composition from the International Music Festival of the Adriatic, which entails a scholarship and a performance of the work in Italy.

[Dr. James Herrera](#), former Turner Fellow, was selected for a postdoctoral position at the American Museum of Natural History.

Undergraduate IMSD-MERGE Scholar, [Maryam Ige](#): Won a travel award to attend and present at ABRCMS; Along with the [SBU iGEM Team](#), presented at the 2014 International Genetically Engineered Machine Competition in Boston, MA and was awarded a bronze medal; Along with fellow undergraduate IMSD-MERGE Scholars, [Sarah Georges](#) and [Denise Laspina](#) presented their research at the 2014 Annual Biomedical Research Conference for Minority Students in San Antonio, TX; Received the Undergraduate Recognition Award for Academic Excellence at the 33rd annual Stony Brook ceremony on April 13.

The Chemistry of Materials Journal accepted an article written by [Crystal Lewis](#), AGEP-T FRAME and Turner Fellow: 'Correlating Size and Composition-Dependent Effects with Magnetic, Mössbauer, and PDF Measurements in a Family of Catalytically Active Ferrite Nanoparticles'.

Former Turner Fellow, [Dr. Christopher Martinez](#), was featured in the Alum Spotlight section of the [Winter 2015 edition of SBU Magazine](#) online. Martinez has been awarded dual fellowships with the American Museum of Natural History.

Scholar Awards & Achievements

Ariel Negron, AGEP-T FRAME Scholar and Turner Fellow, gave an oral presentation at Endocrine Society meeting in San Diego, CA in March.

Spencer Saraf was selected for the 2014 Doctoral Diversity Fellowship in STEM presented by the Office of Diversity, Equity and Inclusion.

Melissa Sims, LSAMP Bridge to the Doctorate and Turner Fellow, [introduced the Secretary of Energy, Ernest Moniz](#), at the dedication of the National Synchrotron Light Source II (NSLS-II) at Brookhaven National Laboratory on February 6.

AGEP-T FRAME Fellow, **Lyl Tomlinson**: Discussed how improvisation training helped him communicate his science and led him to win the National FameLab Competition in 2014 for an article in the Chronicle of Higher Education; Received a Ruth L. Kirschstein National Research Service Award grant from the National Institute of Neurological Disorders and Stroke. His project, The Effects of Voluntary Exercise on Oligodendroglia and Myelin in Developing and Cuprizone-Treated Mice, has been funded for the next three years.

In January, Turner Fellow, **Dewayne Wrencher**, participated in his first ever Pop Up Art Gallery in Patchogue, NY. He was also a featured artist in two spring events hosted by the Fine Arts department.

Two scholars were selected and three scholars were nominated for Stony Brook University's Inaugural "40 under 40" Awards.



Pictured left to right:

- **Arthur James Goff III, PhD** – AGEP & Turner Alumnus, Genetics – Awardee
- **Mireya Mayor, PhD** – Turner Alumna, Interdepartmental Anthropology – Awardee
- **Julio Carrion, DMD, PhD** – AGEP Alumnus, Oral Biology & Pathology – Nominee
- **Joel R. Jimenez, MSW** – Turner Alumnus, School of Social Welfare – Nominee
- **Briana Locicero, BA** – Current Turner Fellow, School of Medicine – Nominee

Three CIE Scholars advanced to the final round of the NASA sponsored international science communication competition, FameLab, which came to the Wang Center at Stony Brook on April 16-17. The Center for Inclusive Education proudly co-sponsored this US regional heat.



Pictured left to right:

- **Lyl Tomlinson**, PhD candidate in Neuroscience, AGEP-T FRAME Fellow
- **Dr. Taylor Schoberle**, Molecular Genetics and Microbiology, IRACDA NY-CAPS Scholar - 'Infection by injection: How plague bacteria can silence our innate immune system by injecting bacterial proteins directly into our innate immune cells'
- **Dr. Jasmine Valentin**, School of Marine and Atmospheric Sciences, AGEP-T FRAME Scholar & Turner Fellow - 'Stable isotope analysis: A tool for studying diet'
- **Jesse John**, PhD candidate in Geosciences, AGEP-T FRAME & Turner Fellow - 'Nano-Alcatraz'
Jesse John was chosen as a wildcard and will have a chance to compete in the national finals to be held next spring at the National Geographic Headquarters in Washington, DC.

Diversity-Focused Graduate Recruitment

GRADUATE SCHOOL PREVIEW DAY

The CIE hosted the first annual multifaceted recruitment event, Graduate School Preview Day, to provide a unique opportunity for attendees to learn exactly what it means to pursue a PhD at Stony Brook. Over 50 students from various undergraduate institutions attended the event which was held on November 21 at the Hilton Garden Inn.

The day began with an optional walking tour of campus. After a brief Meet/Greet, attendees were invited to kickoff the program with Welcome Remarks by Charles S. Taber, PhD, Vice Provost for Graduate & Professional Education and Dean of the Graduate School, and Nina Maung-Gaona, Assistant Dean for Diversity & Inclusion and Director, Center for Inclusive Education. Stony Brook graduate students and postdocs shared information about their current research as well as personal stories about their experiences during a panel discussion. The Networking Lunch that followed boasted over 30 representatives from 20 graduate programs to meet and mingle with the attendees. After lunch, attendees were presented with information on pursuing graduate education from six distinguished admissions faculty members. Since funding plays an important role in PhD pursuits, Toni Sperzel, CIE Program Manager, Turner Fellowship and GEM Fellowship programs, offered comprehensive descriptions of the CIE funding opportunities and available resources for funding graduate study from external funding organizations. The day concluded with lab tours in Materials Science, the Laufer Center, Psychology, Preventive Medicine, Biomedical Engineering and Chemistry. Attendees were able to choose the lab tour that best matched their interests.



PUERTO RICO RECRUITMENT TRIP

In March, a team of representatives from Stony Brook engaged in a three day university recruitment tour of Puerto Rico - visiting three institutions to speak with undergraduate students about graduate school opportunities, with doctoral students about postdoctoral training opportunities, and with faculty about possible grant collaborations. During the three campus visits to the University of Puerto Rico (UPR) Rio Piedras, the UPR Medical Sciences Campus and Universidad Metropolitana (UMET), the team met with 160 undergraduate students, 50 doctoral students and 20 faculty and administrators. Team members toured each of the campuses and were given the opportunity to visit several research facilities, including UPR's new Molecular Sciences Research Building. The team also met with several campus deans and leaders in STEM disciplines and participated in a research symposium. Student and faculty interactions took place through a series of formal talks and small group discussions about research activities, funding opportunities and the application and admissions processes at Stony Brook.



CONSORTIUM FOR GRADUATE DEGREES FOR MINORITIES IN ENGINEERING AND SCIENCE, INC. ANNUAL MEETING (GEM)

Date: August 13-15, 2014
Conference Location: San Diego, CA
CIE Staff: Toni Sperzel

NY METRO AREA GEM GRAD LAB AT NEW JERSEY INSTITUTE OF TECHNOLOGY

Date: October 4, 2014
Conference Location: Newark, NJ
CIE Staff: Toni Sperzel
Recruitment Intake Forms: 10

AMERICAN INSTITUTE OF CHEMICAL ENGINEERS MEETING AT COOPER UNION

Date: October 10, 2014
Conference Location: New York, NY
CIE Staff: Kathryn Piazzola
Recruitment Intake Forms: 10

Diversity-Focused Graduate Recruitment

GRADUATE & PROFESSIONAL SCHOOL ADMISSIONS FAIR AT JOHN JAY

Date: October 15, 2014
Conference Location: New York, NY
CIE Representatives: Dr. Neta Dean and Jason Quinones
Recruitment Intake Forms: 39

SOCIETY FOR THE ADVANCEMENT OF CHICANOS & NATIVE AMERICANS IN SCIENCE (SACNAS)

Date: October 15-19, 2014
Conference Location: Los Angeles, CA
CIE Staff: Dr. Angel Gonzalez and Kathyne Piazzola
Recruitment Intake Forms: 32

SOUTHERN REGIONAL EDUCATION BOARD (SREB)

Date: October 30 – November 2, 2014
Conference Location: Atlanta, GA
CIE Staff: Kathyne Piazzola and Karian Wright
Recruitment Intake Forms: 15

ANNUAL BIOMEDICAL RESEARCH CONFERENCE FOR MINORITY STUDENTS (ABRCMS)

Date: November 12-15, 2014
Conference Location: San Antonio, TX
CIE Staff: Dr. Angel Gonzalez and Kathyne Piazzola
Recruitment Intake Forms: 49

ENGINEERING RESEARCHERS NATIONAL (ERN)

Date: February 2015
Conference Location: Washington, DC
CIE Staff: Dr. Angel Gonzalez and Kathyne Piazzola
CIE Representatives: Drs. Amy C. Marschilok & Kenneth Takeuchi
Recruitment Intake Forms: 29

GARDEN STATE LOUIS STOKES ALLIANCE FOR MINORITY PARTICIPATION (GS LSAMP) GRADUATE PRIMER

Date: April 3, 2015
Conference Location: Rutgers University, NJ
CIE Staff: Dr. Angel Gonzalez and Kathyne Piazzola
Dr. Gonzalez served as a morning panelist, discussing opportunities at Stony Brook University as well as externally funded programs (such as LSAMP-BD, AGEP-T FRAME and IMSD-MERGE) for underrepresented STEM graduate students pursuing their PhDs. Dr. Gonzalez and Piazzola also participated in a lunchtime breakout session to speak with prospective Stony Brook PhD students about their research interests and potential application to Stony Brook.

SBU GOLDEN KEY INTERNATIONAL HONOR SOCIETY

Date: April 8, 2015
CIE Staff: Sheri L. Clark, Toni Sperzel & Karian Wright

FIRST ANNUAL SUNY UNDERGRADUATE RESEARCH CONFERENCE (SURC)

Date: April 10, 2015
Conference Location: The College at Brockport, SUNY
CIE Staff: Sheri L. Clark
Recruitment Intake Forms: 39
Managed recruitment table during the SUNY Graduate School Fair in collaboration with Nancy Goroff.



Conferences

2015 CENTER FOR THE INTEGRATION OF RESEARCH, TEACHING AND LEARNING (CIRTL) NETWORK FORUM

Dates: April 12-14, 2015
Conference Location: College Station, TX
Attendees: Julianna Pryor and Toni Sperzel

2015 INSTITUTIONAL RESEARCH & ACADEMIC CAREER DEVELOPMENT AWARDS (IRACDA)

Dates: June 14-16, 2015
Conference Location: San Diego, CA
Attendees: Nina Maung-Gaona and Karian Wright

2015 CONFERENCE OF THE SOCIETY FOR THE PSYCHOLOGICAL STUDY OF SOCIAL ISSUES (SPSSI) - A ROAD LESS TRAVELED: FORGING LINKS BETWEEN PSYCHOLOGICAL SCIENCE AND SOCIAL POLICY

Dates: June 20-21, 2015
Conference Location: Washington, DC
Attendees: Sheri L. Clark
As part of this conference, Dr. Clark participated in Legislative Engagement Day. She and 50 other psychologists and graduate students visited the offices of our Senators and Representatives to educate them about the value of psychological science in informing public policy.

Presentations, Panels & Workshops

CIE staff are regularly invited to give presentations, workshops, posters and participate on panels at various academic and professional conferences across the county.

2014 SUNY Diversity Conference - Making Diversity Count: Ensuring Equity, Inclusion, Access & Impact

Date: November 12-13, 2014

Conference Location: Albany, NY

Paper (presentation) Title: Academic Engagement of Underrepresented Minorities in STEM Fields: Bridging Research and Practice.
Authors: Bonita E. London, Nina Maung-Gaona and Sheri L. Clark

2015 7th Annual Conference of Understanding Interventions That Broaden Participation in Research Careers

Date: May 15-17, 2015

Conference Location: San Diego, CA

Paper (presentation) Title: AGEP-T frontiers of research and academic models of excellence (FRAME): Bridging research and practice to promote academic engagement of underrepresented minorities in STEM fields.

Authors: Sheri L. Clark, Bonita E. London, Nina Maung-Gaona and Christina Dyar

Status of Publication: In Progress

Poster Title: AGEP-T frontiers of research and academic models of excellence (FRAME): Bridging research and practice to promote academic engagement of underrepresented minorities in STEM fields.

Authors: Sheri L. Clark, Bonita E. London, Nina Maung-Gaona and Christina Dyar

2015 Annual Convention of the Association for Psychological Science (APS)

Date: May 21-24, 2015

Conference Location: New York, NY

Paper (presentation) Title: Perceptions of a threatening and fixed STEM environment undermine women's career confidence.

Authors: Christina Dyar, Bonita E. London, Nina Maung-Gaona and Sheri L. Clark

Status of Publication: Abstract published in conference proceedings

2015 Association of Program Administrators of CSTEP and STEP, Inc. Annual Meeting and Conference (APACS)

Date: June 10-12, 2015

Conference Location: Albany, NY

Paper (presentation) Title: Developing assessment materials: A brief guide to designing and implementing programmatic assessments.

Authors: Bonita E. London

Status of Publication: Abstract published in conference proceedings

Grant Submissions

IRACDA PLUS, NIH National Research Mentoring Network (NRMN) Supplement Project Award, 2015 - \$10,000

Nomination of the IRACDA NY-CAPS program

Submission Status: Awarded June 2015

SBU Presidential Mini-Grant for Departmental Diversity Initiatives, 2015 - \$6,000

"Mentoring African Male PhD Scholars in STEM: Lessons Learned from 15 years of Community Support through the Center of Inclusive Education"

Submission Status: Awarded May 2015

Office of Diversity, Equity and Inclusion, State University of New York, Explorations in Diversity and Academic Excellence, 2015-2016 - \$10,000 + \$2,800 SBU cost share = \$12,800

"CSM UP: An Initiative to Broaden Participation in the Center for Inclusive Education Peer Mentoring Program"

Submission Status: Pending Notification

Presidential Award for Excellence in Science, Mathematics and Engineering Mentoring, Organization Award, 2015 - \$10,000

Nomination of the Center for Inclusive Education

Submission Status: Pending Notification

Grant Support & External Collaborations

Proposal Development Assistance

- NSF 12-564 Louis Stokes Alliances for Minority Participation Broadening Participation Research in STEM Education project: Assisting with writing and development of proposal, data collection and evaluation activities for the department of psychology's "[Fostering \(STEM\) Identity through the Transition \(FIT\) to College among Underrepresented Students](#)". Awarded February 2015 in the amount of \$350,000. CIE Director, Nina Maung-Gaona, will serve as Co-PI on this project.
- US Department of Education [Graduate Assistance in Areas of National Need \(GAANN\)](#): Writing and development of retention and diversity content for proposals submitted by the departments of Materials Science and Engineering, Biomedical Engineering, Chemistry, Psychology, and Ecology and Evolution.
- National Science Foundation National Research Traineeship (NRT): Project development and writing support for the Institute for Advanced Computational Science's proposal, [Data-enabled Research and Education for Advanced Multidisciplinary Science \(DREAMS\)](#).
- National Science Foundation National Research Traineeship (NRT) Innovations in Graduate Education (IGE). Diversity and recruitment content and letter of support for the office of the Integration of Research, Education and Professional Development (IREP) proposal, [Creating a Faculty Community to Support Embedded Writing Instruction](#).
- National Institutes of Health [Minority Access to Research Careers \(MARC\)](#). Writing support for the diversity recruitment and retention plan for proposal submitted by the Department of Molecular and Cellular Biology.
- State University of New York (SUNY). Writing support for diversity recruitment and retention content for the [Application for Certificate Program in Networking and Wireless Communications](#) by the Stony Brook Department of Electrical and Computer Engineering.

Proposal Letters of Support

- US Department of Education, [Graduate Assistance in Areas of National Need \(GAANN\)](#): Letter of support submitted for proposal submitted by the Department of Materials Science and Engineering.
- US Department of Education, [Graduate Assistance in Areas of National Need \(GAANN\)](#): Letter of intent to serve on advisory committee submitted for proposal from the Department of Ecology and Evolution.
- National Institutes of Health, [Minority Access to Research Careers \(MARC\)](#): Letter of support for proposal submitted by Stony Brook Department of Preventive Medicine.
- National Institutes of Health, National Institute for General Medical Sciences [Research Initiative for Scientific Enhancement \(RISE\)](#) program: Letter of support for proposal submitted by the University of Turabo.
- National Institutes of Health, National Institute for General Medical Sciences [Research Initiative for Scientific Enhancement \(RISE\)](#) program: Letter of support for proposal submitted by Brooklyn College.
- State University of New York (SUNY): Letter of support for [Application for Advanced Certificate in Clinical Molecular Biology](#) submitted by the Department of Clinical Laboratory Sciences.
- [Collegiate Science, Technology & Engineering \(CSTEP\)](#): Letter of support for renewal application submitted by Stony Brook University.
- American Society for Pharmacology and Experimental Therapeutics (ASPET) [Summer Undergraduate Research Fellowship \(SURF\)](#) program: Letter of support for proposal submitted by the Department of Pharmacological Sciences.
- Empire State Stem Cell Board, [SBU Stem Cell Training Program](#): Letter of support for proposal submitted by the Departments of Neurobiology and Behavior and Pharmacological Sciences.
- Institute for Broadening Participation (IBP): Letter of support to serve as content advisor on the "[Pathways to Mentoring](#)" program being developed by the institute.
- National Science Foundation Interdisciplinary Behavioral and Social Science Research Competition (IBSS): Letter of support to assist the Department of Psychology on their research proposal, "[Communication in the Global University: A Longitudinal Study of Language Adaptation at Multiple Timescales in Native- and Non-Native Speakers](#)".
- [National Institutes of Health Institutional National Research Service Award](#): Letter of support for the Department of Pharmacological Sciences applications for supplementary funding in their existing T-32 grant.

Other Letters of Recommendation

The Center for Inclusive Education team prepared letters of recommendation for nine CIE Scholars and six Stony Brook University faculty and staff in support of their application and consideration for various opportunities and awards.

Alliances for Graduate Education and the Professoriate-Transformation, Frontiers of Research & Academic Models of Excellence

POSTDOCTORAL FELLOWS



Paulo Castillo, PhD

Dr. Paulo Castillo completed his PhD in Electrical Engineering at The City College of New York and began his AGEP-T funded postdoctoral research under the leadership of Dr. Arthur Sedlacek, III, within the Environmental and Climate Sciences Department, on Aerosol Chemistry and Microphysics at Brookhaven National Laboratory. His research is focused on the optimization, calibration and testing of the novel instrument photothermal interferometer (PTI) to directly measure aerosol absorption based on the thermal dissipation of the spectrally absorbed energy through interferometry stroke, traumatic brain injury and other types of trauma.



Cindy V. Leiton, PhD

Dr. Cindy V. Leiton completed her PhD in Molecular and Cellular Pharmacology at Stony Brook University and began her AGEP-T funded postdoctoral research under the leadership of Dr. Thomas Floyd in the Department of Anesthesiology. Her research is focused on understanding how the brain copes with oxygen deprivation and which cells may be targeted to circumvent such an event which can occur upon stroke, traumatic brain injury and other types of trauma.

GRADUATE STUDENT FELLOWS

Name	Program	Advisor
Benedette Adewale	Chemistry	Dr. Dale Drucekhammer
Azeez Aranmolate	Molecular & Cellular Biology	Dr. Holly Colognato
Emmanuel Asare	Genetics	Dr. Eckard Wimmer
Alejandra Castano	Chemistry	Dr. Orlando Scharer
Oluwakayode Ekwunife-Orakwue	Technology, Policy & Innovation	Dr. Tian-Lih Teng
Patricia Enmore	Neuroscience	Dr. Craig Evinger
Pedro Fernandez	Interdepartmental Anthropology	Dr. William L. Jungers
R. Emilio Fernandez	Technology, Policy & Innovation	Dr. David Ferguson
Diana Guimet	Genetics	Dr. Patrick Hearing
Kevin Hauser	Chemistry	Dr. Carolos Simmerling
James Herrera	Interdepartmental Anthropology	Dr. Patricia Wright
Jesse John	Geosciences	Dr. John Parise
Crystal Lewis	Chemistry	Dr. Stanislaus Wong
Joe Matarlo	Biochemistry & Structural Biology	Dr. Peter Tonge
Daphne Meza	Biomedical Engineering	Dr. Wei Yin
Carrie Mongle	Interdepartmental Anthropology	Dr. Fred Grine
Ariel Negron	Neuroscience	Dr. Maricedes Acosta-Martinez
Allison Nesbitt	Interdepartmental Anthropology	Drs. Karen Baab & William Jungers
Celest Okoli	Materials Science & Engineering	Dr. Robert Kukta
Jason Quinones	Molecular & Cellular Biology	Dr. Bruce Demple
Melissa Sims	Geosciences	Dr. Lars Ehm
Lyl Tomlinson	Neuroscience	Dr. Holly Colognato
Steve Tsotras	Biochemistry & Cell Biology	Dr. Benjamin Martin
Jinelle Wint	Molecular & Cellular Biology	Dr. J. Peter Gergen

NSF RESEARCH STUDY

The AGEP-T FRAME research project investigates the psychosocial processes that promote the academic and career engagement of STEM graduate students and postdoctoral fellows. Utilizing repeated measures within a longitudinal survey research design, the project explores the factors that contribute to how members of underrepresented minority groups develop and maintain a high, stable STEM self-efficacy and identity. Longitudinal data collected to date supports the project's theoretical models: Graduate students' perceptions of the inclusiveness of their academic departments predict STEM self-efficacy and belonging over time, and ultimately their intentions to persist vs. withdraw from their STEM fields. Manuscripts are currently being prepared for publication in peer reviewed journals.

The objectives in Year 2 of the research project were to: 1) continue collecting data from existing cohorts of graduate students and postdoctoral fellows; 2) recruit a new incoming cohort of graduate students and postdoctoral fellows (with a particular focus in increasing the sample of URM scholars participating in the research project; 3) analyze the longitudinal data collected to date; 4) prepare and submit empirical manuscripts for review and publication; and 5) disseminate theoretical models and research findings at local and national conferences.

AGEP-T FRAME CONFERENCE TRAVEL AWARDS

The AGEP-T FRAME Conference Travel Program provides limited financial support for scholars to attend and/or present research at national or international conferences. Current scholars can apply for a maximum of \$1,200 annually which may be divided to cover expenses for up to two conferences. Eight out of 13 conference attendees gave a poster presentation.

Total funds awarded: \$11,017.

Name	Program	Conference	Organizing Agency
Alejandra Castano	Chemistry	2015 Gordon Research Seminar and Conference on Mammalian DNA Repair	Gordon Research Conferences
Allison Nesbitt	Interdepartmental Anthropology	The American Association of Physical Anthropologists 84th Annual Meeting	American Association of Physical Anthropologists
Benedette Adewale	Chemistry	2015 Gulf of Mexico Oil Spill & Ecosystem Science Conference	Gulf of Mexico Research Initiative
Cindy Leiton	Anesthesiology	Neuroscience 2014	Society for Neuroscience
Cindy Leiton	Anesthesiology	Hypoxia: From Basic Mechanisms to Therapeutics (E3)	Keystone Symposia
Crystal Lewis	Chemistry	TechConnect World Innovation Conference	TechConnect
Daphne Meza	Biomedical Engineering	International Conference on Vascular Biology	World Academy of Science, Engineering and Technology
James P Herrera	Interdepartmental Anthropology	Annual meeting of the AAPA	American Association of Physical Anthropology
Jason L. Quinones	Molecular & Cellular Pharmacology	Gordon Research Conference- Mammalian DNA Repair: Controlling Traffic on the Streets and at the Crossroads of DNA Repair Pathways	Gordon Research Conferences
Jinelle Wint	Molecular Cellular Biology	Northeast Society for Developmental Biology Meeting	Northeast Society for Developmental Biology
Joe Matarlo	Biochemistry & Structural Biology	249th ACS National Meeting	American Chemical Society
Melissa Sims	Geosciences	Modern Methods in Rietveld Refinement and Structural Analysis Workshop	North American Solid State Chemistry Conference
Oluwakayode Ekwunife-Orakwue	Technology, Policy & Innovation	Blended & Online Learning Summit	NYSCATE

AGEP-T FRAME SEED GRANTS

AGEP-T FRAME Research Grant funding is a competitive program used to cover research-related expenses. The granting of funds is based on both academic rigor and the involved research. Current scholars can apply for a maximum of \$3,000 in the following categories: Research Grants, Technical Skill Development and Research & Network Collaboration.

Total seed grants awarded: \$11,995.

Name	Program	Project Title	Project Start Date	Project End Date
Pedro Fernandez	Interdepartmental Anthropology	The functional morphology and quantification of metatarsophalangeal joint shape and congruence in anthropoids	1/26/2015	5/30/2015
Celest Okoli	Material Science & Engineering	Doped Carbon Nanotubes as Electrode Materials for Energy Conversion & Storage Systems	2/2/2015	7/20/2015
Lyl Tomlinson	Neurobiology & Behavior	The Effects of Voluntary Exercise on Oligodendroglia and Myelin in Developing and Cuprizone-Treated Mice	4/20/2015	4/20/2016
Ariel Negron	Neuroscience	Kisspeptin-specific PTEN signaling and its role in metabolic regulation of gonadotropin release	6/1/2015	9/1/2015

National GEM Consortium

GEM FELLOWS

Ammar Morgan completed the five year BE/MS combined degree program in Mechanical Engineering at Stony Brook and will be participating in two industry internships with Brookhaven National Laboratory. As an undergraduate, Morgan was a Science Undergraduate Laboratory Internships (SULI) intern at BNL where he worked on the Relativistic Heavy Ion Collider project and designs for upgrades to the sPhenix project. He was a CSTEP scholar and advisory board member, and served as president of the Muslim Student Association. Morgan is the fourth GEM Fellow to be sponsored at Stony Brook University and is joined in being funded this year via GEM by **Daphne Meza**, PhD scholar in the Department of Biomedical Engineering. Meza received the GEM Fellowship in 2012, but was able to defer her funding until 2014 as the result of her selection as a LSAMP-BD Fellow as well.

RECRUITMENT

On October 18, CIE staff member Toni Sperzel traveled with three Stony Brook undergraduate and master's scholars to the annual New York Metro area GEM GRAD Lab (Getting Ready for Advanced Degrees). This one-day seminar offered workshops and panels on deciding if graduate school is right for you, preparing a competitive application, finding funding and making the most of your graduate studies. In 2015, the CIE will host the first GEM GRAD Lab to be held at Stony Brook University. We look forward to coordinating what will be a spectacular event for underrepresented undergraduate students in STEM disciplines who want to learn more about graduate school. The National GEM Consortium is a unique and powerful connection to a national network of universities and employers. This partnership promotes the participation of underrepresented groups in post-graduate science and engineering education and the technical workforce.

BROOKHAVEN NATIONAL LABORATORY

The Center for Inclusive Education coordinated a compilation of collaborations between Brookhaven National Laboratory and the CIE community to be highlighted in a publication. Scholars were asked to provide information about how their work intersects with BNL - be it through classes, research or advisors.



Initiative for Maximizing Student Development, Maximizing Excellence in Research for Graduate Education

IMSD-MERGE kicked-off in 2014 as the first cohort was welcomed to the CIE. The program will help increase the number of underrepresented individuals completing undergraduate and doctoral degrees in the biomedical sciences, further supporting SBU's efforts in expanding and diversifying its undergraduate and graduate programs. IMSD-MERGE is the fifth highly visible and competitive award received by the CIE.



IMSD-MERGE COHORTS

2014 IMSD-MERGE undergraduate	Program	Advisor
Alexandria Dellapenna	Biology	Howard Sirotkin
Denise Laspina	Biology	William Van Nostrand; Alexei Soares (BNL)
Maryam Ige	Biomedical Engineering	Danny Bluestein
Obiora Egbo	Biochemistry (minor in Bioengineering)	Michael Frohman
Sarah Georges	Biology (specialization in Bioengineering)	Wei Yin

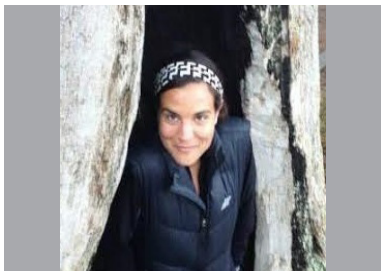
2014 IMSD-MERGE graduate	Program	Advisor
Chantal Adlam	Chemistry	Peter Tonge
Kellon Belfon	Chemistry	Carlos Simmerling
Dominic Moronta	Chemistry	Stanislaus Wong
Andreyah Pope	Biochemistry & Structural Biology	Steven Smith
Jinelle Wint	Molecular & Cellular Biology	Howard Sirotkin

2015 IMSD-MERGE undergraduate	Program	Advisor
Darwin Carbajal	Biochemistry (minor in Bioengineering)	Gabor Balazsi
Daniel Irizarry	Biology (specialization in Developmental Genetics)	Jennie Williams
Kennelia Mellanson	Biology (minor in Bioengineering)	Ellen Li
Joselin Vargas	Biochemistry	Gerardo Mackenzie

2015 IMSD-MERGE graduate	Program	Advisor
Emilie Bouda	Molecular & Cellular Pharmacology	TBD
Ana Paula Delgado	Genetics	TBD
Anthony Stapon	Molecular & Cellular Pharmacology	TBD
Jinette Tolentino Collado	Chemistry	TBD
Tanya Victor	Molecular & Cellular Pharmacology	TBD

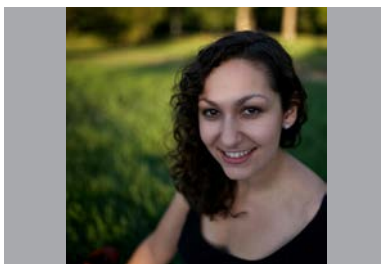
Institutional Research and Academic Career Development Award, New York Consortium for the Advancement of Postdoctoral Scholars

NEW POSTDOCTORAL SCHOLARS



Sarah Alaei, PhD (Cohort 3)

Dr. Sarah Alaei completed her PhD at Columbia University where she studied the role of acetylation as a regulator of gap junction protein stability and function. Sarah joined Dr. David Thanassi's lab in the Department of Molecular Genetics and Microbiology, which is broadly interested in the underlying mechanisms of virulence protein secretion employed by diverse bacterial species. Dr. Alaei's project will be focused upon characterizing the unusual pilus biogenesis pathways utilized by *P. gingivalis* in order to adhere to host cells and other microbes.



Elizabeth Atkinson, PhD (Cohort 3)

Dr. Elizabeth Atkinson completed her PhD in Evolution, Ecology and Population Biology at Washington University. Dr. Atkinson conducted an interdisciplinary project examining the genetic architecture and evolvability of brain traits in primates. She joined Dr. Benna Henn's lab in the Department of Ecology & Evolution where she will be working on biomedical and evolution-oriented projects utilizing the lab's extensive dataset from the African Genome Variation Project.



Jillian Cypser Nissen, PhD (Cohort 3)

Dr. Jillian Cypser Nissen completed her PhD in Molecular and Cellular Pharmacology at Stony Brook University. Dr. Nissen joined Dr. Stella Tsirka's lab in the Department of Pharmacology, which broadly focuses on the role of the resident immune cell of the brain and spinal cord, the microglia, in various central nervous system diseases. Her research primarily focuses on how microglia are responsible for mediating neuronal survival in multiple sclerosis.



Dominique Williams, PhD (Cohort 4)

Dr. Dominique Williams earned her PhD in Chemistry at Georgia State University where she worked under Dr. Kathryn Grant. Her graduate research entailed the design of biomimetic models of acidic phospholipases from lanthanide metal ions and complexes and DNA photocleavage studies by Cu(II) complexes. She is currently a NY-CAPS Fellow at Stony Brook University working under Dr. Elizabeth Boon in the Department of Chemistry where she is studying the mechanism of signaling pathways that have been linked to the modulation of bacterial biofilms.

ANNUAL MEETING

The 2015 National IRACDA Conference, Waves of Change: Research, Teaching, and Diversity, was held on June 14-16 at the Catamaran Resort Hotel in San Diego, CA. Eight NY-CAPS Scholars attended together with four Stony Brook staff members and three collaborators from partner institutions. NY-CAPS Scholars presented posters on their various research projects.

POSTDOC VIDEOS

Our second cohort of NY-CAPS Scholars filmed high definition profile video outlining their background, research project and future plans. These videos are posted on the NY-CAPS website as well as the Center for Inclusive Education's [YouTube channel](#).

2015 IRACDA NY-CAPS SEND-OFF

Dr. Tracy Callender (Cohort 1) accepted a full-time Assistant Professor faculty position at LIU-Post in the Department of Biology. She will be teaching an introductory biology course for non-majors and will also be the coordinator for the non-majors introductory labs.

Dr. William Gillis (Cohort 1) accepted a tenure-track position in the biology department at SUNY Old Westbury. As an Assistant Professor in Organismal Biology, Dr. Gillis will be teaching courses in introductory and developmental biology, as well as comparative anatomy. He will also be starting a research lab with undergraduate students studying cell signaling and embryology.

Dr. Gretchen López-Hernandez (Cohort 1) accepted an assistant professorship in the Department of Physiology at Kansas City University of Medicine and Biosciences.

Dr. Javier Monzón (Cohort 2) accepted a tenure-track position at Pepperdine University. In March, he had a second-authored paper accepted in Proceedings of the National Academy of Sciences (PNAS): ‘Hypercholesterolemia and ApoE deficiency result in severe infection with Lyme disease and relapsing fever *Borrelia*’.

Dr. Marianne Moore (Cohort 2) accepted a tenure-track position at Arizona State University where she will be an Assistant Professor in Animal Ecology, a member of the Science and Mathematics group on the Polytechnic campus, and will mentor undergraduate and master’s students in the Applied Biological Sciences Program. She will also have the opportunity to mentor PhD students through the main Tempe campus.

PEDAGOGY COURSE

The third cohort of NY-CAPS Scholars participated in a newly revamped pedagogy course specifically designed for the NY-CAPS program and coordinated by the office of Teaching, Learning & Technology. This year the pedagogy sessions were held once per week over the course of two semesters, a shift from the initial twice per week sessions over the course of one semester. In addition, through the AGEP-T FRAME program and recently established Office for the Integration of Research, Education and Professional Development at Stony Brook University, this course is reaching an even greater population of postdocs and graduate students on campus. This course is now an integral component of the professional training for the AGEP-T FRAME Postdocs as well.

PUBLICATIONS, PRESENTATIONS & AWARDS

Dr. Elizabeth Atkinson’s article, “Cortical Folding of the Primate Brain: An Interdisciplinary Examination of the Genetic Architecture, Modularity, and Evolvability of a Significant Neurological Trait in Pedigreed Baboons (Genus *Papio*)” was selected for the cover of an issue of *Genetics*.

Dr. William Gillis: Kirmizitas A, Gillis WQ, Zhu H, Thomsen GH “Gtpbp2 is required for BMP signalling and mesoderm patterning in *Xenopus* embryos”. *Dev Biol* 2014 Aug 15; 392(2):358-67.

Dr. Gretchen López-Hernandez: López, G. Y., Talmage, D. A., and Role, L.W. Modulation of prefrontal cortical circuits by cholinergic input from the nucleus basalis. Society for Neuroscience 44th Annual Meeting. November 19, 2014.

Dr. Javier Monzón: Monzón J. First regional evaluation of nuclear genetic diversity and population structure in northeastern coyotes (*Canis latrans*). *F1000Res*. 2014; 3:66. PubMed PMID: 25075291; PubMed Central PMCID: PMC4097358.

Dr. Marianne Moore’s poster titled “Host defense peptide diversity in bats: implications for resistance to White-Nose Syndrome, was selected as the best bioinformatics and computational biology poster at the 2015 IRACDA National Conference.

CONFERENCE TRAVEL AWARDS

Total funds awarded: \$10,699 (Does not include travel support for the IRACDA annual meeting)

Name	Conference	Organizing Agency
Sarah Alaei	American Society for Microbiology General Meeting	American Society for Microbiology
Elizabeth Atkinson	The American Association of Physical Anthropologists 84th Annual Meeting	The American Association of Physical Anthropologists (AAPA)
Elizabeth Atkinson	American Society of Human Genetics 2015 Annual Meeting	American Society of Human Genetics
William Gillis	Society for Developmental Biology 73rd Annual Meeting	Society for Developmental Biology
Gretchen López-Hernandez	Society for Neuroscience	Society for Neuroscience
Javier Monzón	95th Annual Meeting of the American Society of Mammalogists	American Society of Mammalogists
Marianne Moore	North America Symposium on Bat Research	North America Symposium on Bat Research
Taylor Schoberle	Innate Immunity and Determinants of Microbial Pathogenesis	IRACDA

SUNY Turner Fellowship Program

As a result of the substantial contribution announced (\$250,000 over five years) by President Stanley at the 2014 State of the University Address, the Turner Fellowship was able to welcome its largest incoming cohort of fellows in what appears to be the history of the fellowship program. With 24 new first year fellows and three dissertation fellowship recipients, the incoming class of 27 represents a wide variety of scholars across the graduate disciplines.

2014 Turner Fellows	Program	Previous Institution
Owen Abe	PhD in Materials Science & Engineering	University of Maryland, Baltimore
Benedette Adewale	PhD in Chemistry	CUNY City College
Chantal Adlam	PhD in Chemistry	John Jay College of Criminal Justice
Jordi Alonso	MFA in Creative Writing	Kenyon College
Sarah Bannon	PhD in Psychology	University of Iowa
Kellon Belfon	PhD in Chemistry	Long Island University, Brooklyn
Nicole Bender	PhD in Ecology & Evolution	Marist College
Elizabeth Berrigan	PhD in Physics & Astronomy	Chapman University
Ernesto Blanes-Martinez	PhD in Philosophy	University of Paris VIII
Laura Bray	PhD in Hispanic Languages & Literature	University of Minnesota, Twin Cities
Jesse Brizzi	PhD in Computer Science Engineering	University of South Florida
Dex-Ann Brown	PhD in Molecular & Cellular Pharmacology	CUNY York College
Marcus Brown	PhD in Philosophy	University of Michigan, Dearborn
Michael Cortes	PhD in Applied Mathematics & Statistics	SUNY Stony Brook
Cortney Crespo	MD	St. Joseph's College
Nicole Cronin	PhD in Physics & Astronomy	Muhlenberg College
Daniel DeDora	PhD in Biomedical Engineering	SUNY Stony Brook
Nicole Georgopolous	PhD in Art History	Reed College
Ashley Greene	PhD in Psychology	University of Texas at Austin
Moises Guardado	PhD in Genetics	SUNY Stony Brook
Diana Mendez	PhD in Hispanic Languages & Literature	City College of New York
Johnathan Nieves	MD	Dickinson College
Ricardo Raudales	PhD in Neuroscience	Columbia University
Mariana Rius	PhD in Marine & Atmospheric Sciences	College of Charleston
Melissa Sims	PhD in Geosciences	SUNY Stony Brook
Steve Tsotras	PhD in Genetics	SUNY Stony Brook
Dewayne Wrencher	MFA in Studio Art	University of Wisconsin, La Crosse

The Hilton Garden Inn served as the location for this year's Turner Welcome Dinner, which took place on September 30. Joined by over 110 CIE Scholars, campus leaders, faculty, administrators and members of the Turner family, the event provided an elegant opportunity to welcome the new fellows to the Turner Fellowship 'family'. Guest speakers included Turner Fellow and FameLab competition winner Lyl Tomlinson from the doctoral program in Neuroscience, SUNY Chief Diversity Officer and Senior Associate Vice Chancellor for Diversity, Equity & Inclusion Carlos Medina, Joyce Turner and recently retired SBU faculty member Dr. Robert Liebermann from the Geosciences Department. 2014 marks the 27th year of the Turner Fellowship program. Known as the Graduate Diversity Fellowship Program (GDFP) across the SUNY System, the Turner Fellowship is one of 24 GDFP programs funded by the State University of New York's Office of Diversity, Equity and Inclusion.



SUNY Turner Fellowship Program



TURNER SUMMER RESEARCH GRANTS

Sixteen Turner Fellows were selected as recipients of Summer Research Grants, totaling \$46,990.54.

Turner SRG Recipient	Program	Project
Nicole Bender	PhD, Ecology & Evolution	Acoustic methods for tracking pipit recovery following rat and reindeer eradication
Michael Cortes	PhD, Applied Math & Statistics	Lambda phage lysis-lysogeny switch and the multiplicity effect
R. Emilio Fernandez	PhD, Technology & Society	The mathematics regents course enrollment and advanced placement mathematics course access of Bronx County public high schools: Amix-methods policy analysis
Pedro Fernandez	PhD, Anthropology	The functional morphology and quantification of metatarsophalangeal joint shape and congruence in anthropoids
Jacinth Greywoode	PhD, Music Composition	International music festival of the adriatic
Briana Locicero	MD	Leadership and education program for students in integrative medicine
Vanessa Lynn	PhD, Sociology	Collective memories of the war on drugs: Towards a discourse of responsibility and victimhood
Carrie Mongle	PhD, Anthropology	Dental topography and the alpha taxonomy of australopithecus africanus
Allison Nesbitt	PhD, Anthropology	Morphological integration between the face and dentition throughout ontogeny
Johnathan Nieves	MD	The atahualpa project: A population based study of peripheral artery disease and frailty in rural coastal Ecuador
Celest Okoli	PhD, Materials Science & Engineering	Doped carbon nanotube as electrode material for energy conversion and storage systems
Jason Quinones	PhD, Molecular & Cellular Pharmacology	Exploring the ubiquitination status of oxidative DNAPolymerase Beta in vivo
Sasha Rodriguez	PhD, Sociology	Creative alternatives for transnational LGBTI organizing
Melissa Sims	PhD, Geosciences	Identification of plagioclase phases and phase transitions by time resolved fast compression powder diffraction
Oli Stephano	PhD, Philosophy	Immanence and ecological ethics
Steve Tsotras	MS, Genetics	Regulation of protein sumoylation by adenovirus

The nominations cycle for the 2015-2016 academic year produced 54 nominees and 20 new fellows for the upcoming fall semester.

Louis Stokes Alliance for Minority Participation, Bridge to the Doctorate

LSAMP-BD SCHOLAR



Edward Turner

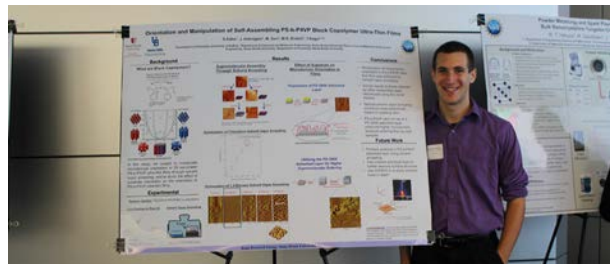
LSAMP-BD welcomed Edward Turner, a MS Student in the Department of Applied Mathematics & Statistics. Originally from Queens, NY, he completed this undergraduate work at Stony Brook University, where he was awarded a LSAMP scholarship. He studied how to address mathematical and engineering problems by using computational methods and how these computational methods may be optimized. Turner passed his qualifying exam in June and is currently transitioning to the PhD program in the Department of Applied Mathematics and Statistics where he will be working with Dr. Xiao-Lin Li.

LSAMP PROFESSIONAL DEVELOPMENT INSTITUTE

Seven LSAMP-BD Fellows traveled to Washington, DC on October 3 to attend the first ever NSF-sponsored LSAMP Professional Development Institute. During the institute, multiple workshops and speakers provided LSAMP Scholars with strategies and tactics for maximizing their doctoral research experiences and preparing themselves for the job search process.

Research Experience for Undergraduates in Nanotechnology for Health, Energy and the Environment

The REU in Nanotechnology for Health, Energy and the Environment residential summer program welcomed its fifth cohort of undergraduates to Stony Brook on June 1. Under the direction of PI Dr. Gary Halada, nine interns from seven different undergraduate institutions participated in the program. This year, participants were again accompanied by IMSD-MERGE scholars. The summer program concluded with a Symposium & Closing Ceremony held on Friday, August 7.



REU Participant	Undergraduate Institution	SBU Advisor	Department
Cara Gannett	SUNY Geneseo	Dr. Amy C. Marschilok	Chemistry
Arielys Mendoza	SUNY Fredonia	Dr. Wei Yin	Biomedical Engineering
Carmenn Ooi	SUNY Stony Brook	Dr. Tae Jin Kim	Chemical & Molecular Engineering
Yunesca Rivera	Universidad Metropolitana	Dr. Gary Halada	Materials Science & Engineering
Chloe Rojas	Suffolk County Community College	Dr. Tae Jin Kim	Chemical & Molecular Engineering
Nicholas Romero	SUNY Binghamton	Dr. Gary Halada	Materials Science & Engineering
Coralys Sanchez-Martinez	Universidad Metropolitana	Dr. Wei Yin	Biomedical Engineering
Samantha Weber-Fishkin	SUNY Stony Brook	Dr. Molly Frame	Biomedical Engineering
Rebecca Wyborski	Cal State Long Beach	Dr. Jason Trelewicz	Materials Science & Engineering

Center for Inclusive Education Staff



STAFF UPDATES

Julianna Pryor joined the CIE team on November 3 as a Content and Publications Writer. This Research Foundation position was created to assist the CIE team with community outreach, social media, publications and grant proposal writing.

Toni Sperzel, Program Manager, Turner Fellowship and GEM Fellowship programs, was granted permanency at Stony Brook University in December. Sperzel has worked for the Center for Inclusive Education since 2007 and is the first team member to become a permanent employee of the University.

STAFF AWARDS

CIE Postdoctoral Associate, **Dr. Sheri Clark**, won a travel award to attend the 7th Annual Conference on Understanding Interventions that Broaden Participation in Sciences Careers in San Diego, CA in May.

Director, **Nina Maung-Gaona**, won two prestigious awards for her public and professional service for underrepresented populations – the 2015 Public Service Award from the Suffolk County Dr. Martin Luther King Jr. Commission (January) and the 2015 Lawrence Timpa Memorial Award for Professional Service from the Suffolk County Human Rights Commission (May). CIE staff and scholars, along with Stony Brook faculty members, joined together at the respective ceremonies to honor Maung-Gaona’s achievements. Maung-Gaona was nominated for the 2015 Chancellor’s Award for Excellence in Professional Service from the SUNY Chancellor’s Office as well. Award status is pending.

AGEP-T FRAME and IRACDA NY-CAPS Program Manager, **Karian Wright**, was selected by Caribbean Life News as a recipient of their “40 under 40” award. Wright was recognized for her professional achievements working with underrepresented postsecondary scholars, including six years as an advisor, adjunct faculty member and Assistant Director of Graduate Student Recruitment at Monroe College; her work since 2013 with the Center for Inclusive Education; and her service and volunteerism with the community as a reverend and minister.



Contact List

Nina Maung-Gaona
Assistant Dean for Diversity and Inclusion
Director, Center for Inclusive Education
Nina.Maung@stonybrook.edu
631-632-1386

Sheri Clark
Postdoctoral Associate
Sheri.Clark@stonybrook.edu
631-632-1485

Angel Gonzalez
Postdoctoral Associate
LSAMP-BD & IMSD-MERGE
Angel.i.Gonzalez@stonybrook.edu
631-632-1385

Kathryne Piazzola
CIE Administrator
Kathryne.Piazzola@stonybrook.edu
631-632-1387

Julianna Pryor
Content & Publications Writer
Julianna.Pryor@stonybrook.edu
631-632-1691

Donna Scala
CIE Administrative Assistant
Donna.Scala@stonybrook.edu
631-632-1386

Toni Sperzel
Program Manager
Dr. W. Burghardt Turner Fellowship & GEM
Toni.Sperzel@stonybrook.edu
631-632-9560

Karian Wright
Program Manager
AGEP-T FRAME & IRACDA NY-CAPS
Karian.Wright@stonybrook.edu
631-632-1336

Report Published on August 17, 2015

Center for Inclusive Education
2401 Computer Science Building
Stony Brook University
Stony Brook, NY 11794-4422

stonybrook.edu/cie
CIE_GraduateSchool@stonybrook.edu
631-632-1387