

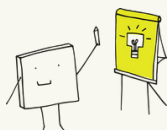
## Dear Assessment Coordinators,

Welcome back to campus for another exciting semester! We hope you enjoyed a restful summer and are ready to tackle Fall 2024. Check out our new and improved newsletter for important information about assessment in the months ahead.

## Assessment Workshops & Events

Join OEE for an exciting lineup of workshops on assessment topics like Universal Design, AI, alternate taxonomies, representing the student voice, reflective practice, and equity in assessment. Register in advance for in-person or zoom options on our [events calendar](#).

Save the date for our **3rd Annual Assessment Symposium on October 30, 2024** in the Student Union!



## Coordinator Feedback: Surveys & Focus Groups

OEE will be reaching out to learn more about our your perceptions of the assessment process in the coming months! Please consider participating in the upcoming assessment coordinator survey and/or focus group discussions. Your feedback will be valuable as we continue to foster a culture of data-driven improvement at SBU. Invitations to participate are heading your way soon!

## Department/Program Review

OEE is excited to support its second cohort through the [Department/Program Review](#) process! This cyclical process of self-study and external evaluation relies heavily on the annual program assessment reports. Please know that the work you do on these reports provides departments with critical data to inform the self-study process and promote a successful peer review.

## Successful MSCHE Site Visit

SBU reaffirmed its accreditation by MSCHE with a 'clean bill of health' and two commendations related to assessment. We could not have achieved this milestone without the dedication of our working groups, Assessment Council, and each for you! For more information, read the [Site Visit Team's full report](#).



## Academic Program Assessment

### 2023-24

Thanks to your hard work and collaboration, we received 95% of all academic program assessment reports (APAR) during the 2023-24 academic year! Programs will receive formative feedback on their reports from the Assessment Council this Fall.

### 2024-25

The APAR deadline has shifted to September 30 annually in response to feedback from assessment coordinators, academic programs, and Assessment Council members.

*This means that your next APAR is **due September 30, 2025** for the 2024-25 academic year. There is no report due this September.*

Stay tuned for more details on how to submit your report in our streamlined content management system.

For more information on the assessment cycle timeline, check out the [FAQs on OEE's reporting page](#).

## General Education Assessment

### 2023-24

OEE assessed all 20 SBC categories in Spring 2023 with the assistance of SBC instructors. We found that 80% of students performed at the "Acceptable" level or better in 16 of the 20 categories. For more detailed information on the outcomes of this assessment, [read the summary report](#).

### 2024-25

Following a vote by the Assessment Council, SBU adopted a staggered approach to general education/SBC assessment. We will continue with our mixed-methods 'guided conversations' approach, but will only assess 4-5 categories per year to align with MSCHE recommendations on sustainable practices. Assessment conversations will take place in the Spring as a reflection on completed Fall courses.

## SBC Categories

Instructors teaching in the following SBC categories this Fall may be asked to participate in the Spring SBC assessment:

- SBS
- QPS
- ESI
- SPK
- HFA+



**Has the assessment coordinator for your program changed?**  
Let us know so that important information gets to the right person!